

MIDLAND COUNTY
Equalization Department
1212 James
Sanseve Board
Midland, MI 48640

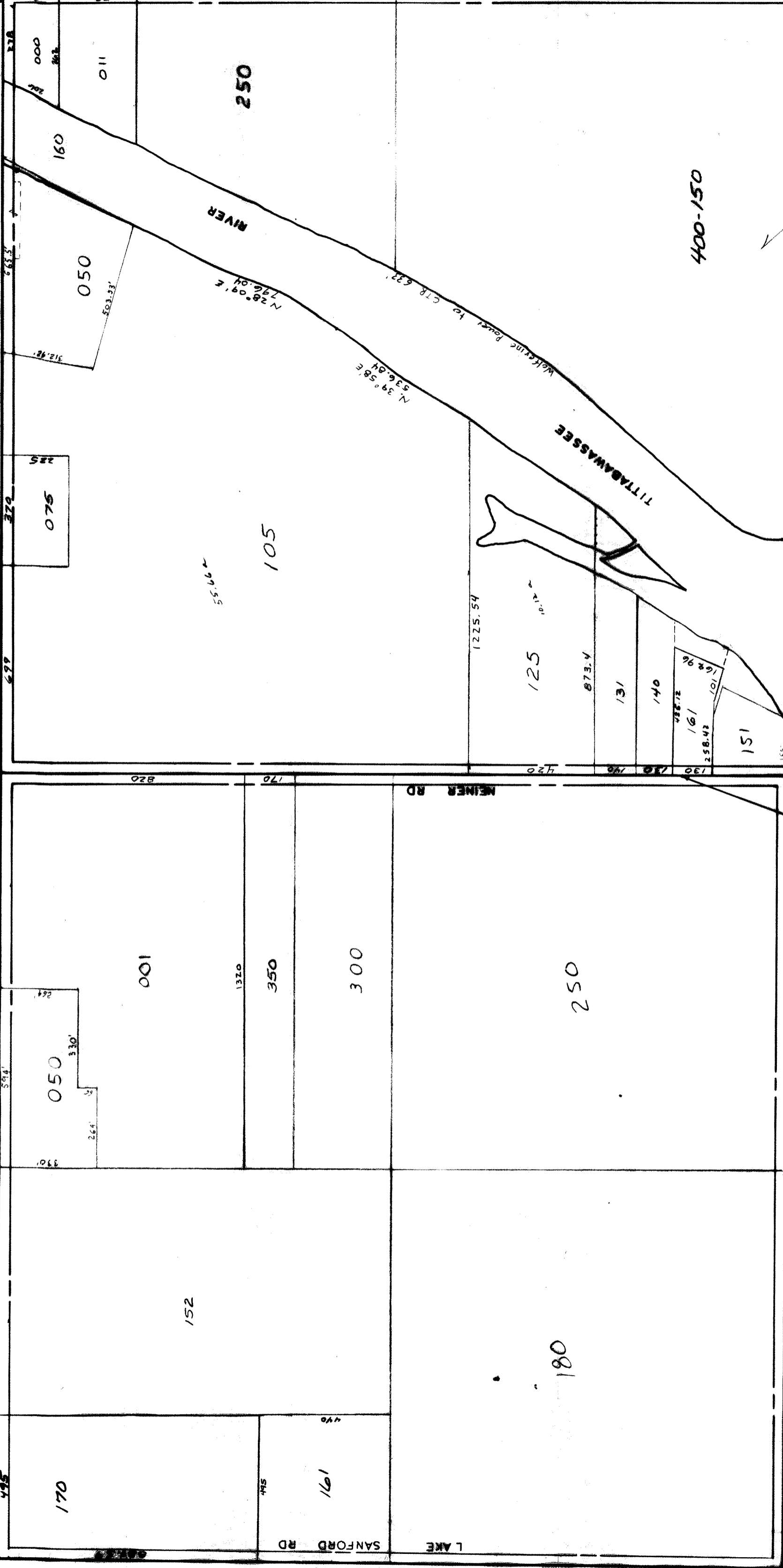
1/4 SEC 200
CURTIS RD

NW SEC COR

N 1/4 COR

1/4 SEC 100

NE SEC COR



N&S 1/4 LINE
SCALE 1" = 300'
DRAWN BY R.R.Y.

T16N R1W

EDENVILLE TOWNSHIP

REV. 12-14-07
N1/2SEC11