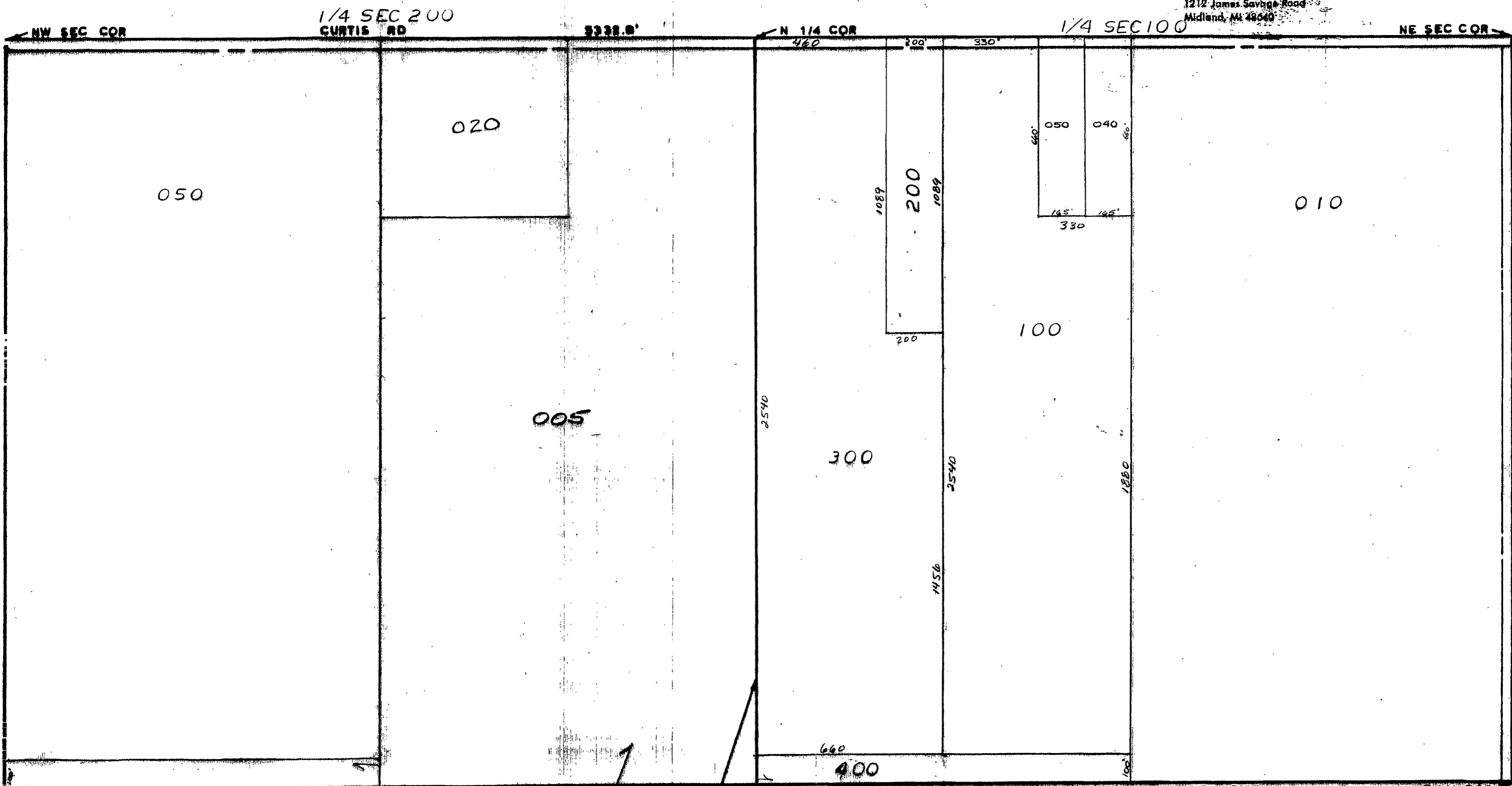


MIDLAND COUNTY
Equalization Department
1212 James Savage Road
Midland, MI 48640



N&S 1/4 LINE
SCALE 1" = 300'
DRAWN BY R.R.Y.

ALL MERIDIAN SCHOOL DIST

T 16N R 1W

EDENVILLE TOWNSHIP

REV. 1-3-95
N1/2 SEC 10

981592 LAKE SANDRO RD