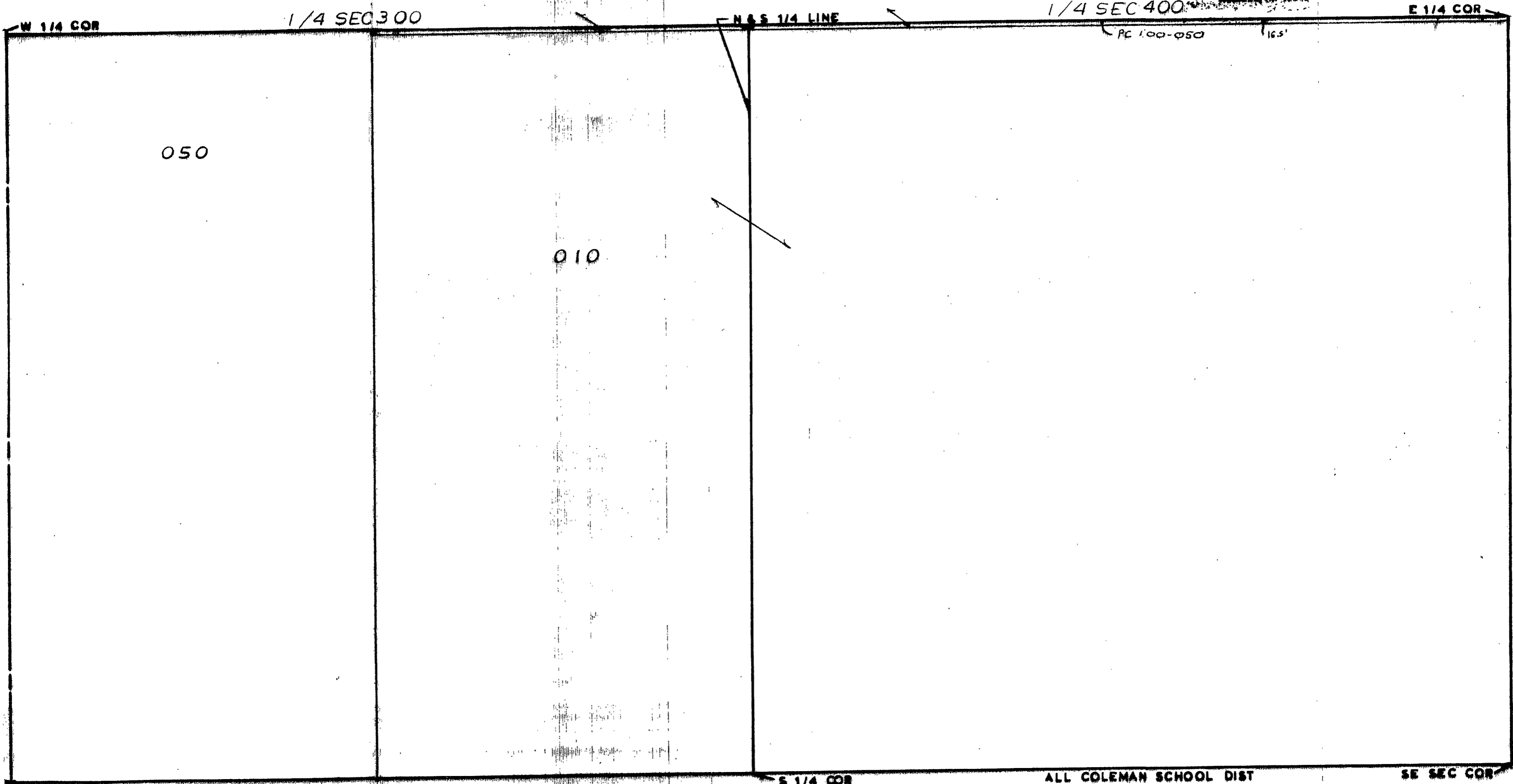


MIDLAND COUNTY  
Equalization Department  
1212 James Savage Road  
Midland, MI 48640



T 16N R 1W

EDENVILLE TOWNSHIP

REV.             
S 1/2 SEC 8

SCALE 1" = 300'  
DRAWN BY R.R.Y.

ALL COLEMAN SCHOOL DIST