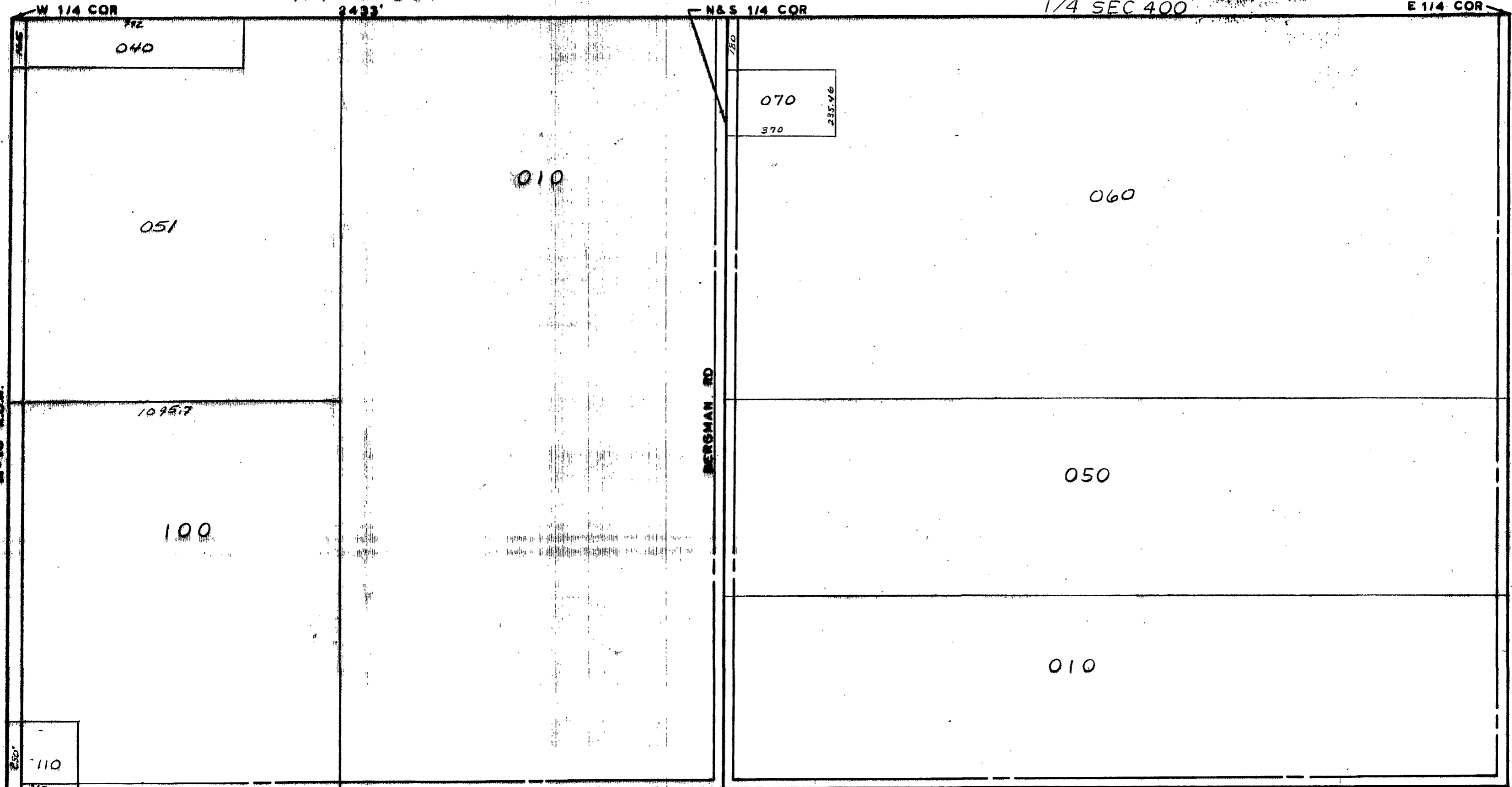


MIDLAND COUNTY
Equalization Department
1212 James Savage Road
Midland, MI 48640

1/4 SEC 300
2433'

1/4 SEC 400



W 1/4 COR 112 040 1095.7 100 110 SW SEC COR 1106 SHEARER RD 2441' S 1/4 COR 2657.16' ALL COLEMAN SCHOOL DIST SE SEC COR

SCALE 1" = 300'
DRAWN BY R.R.Y.

T 16N R 1W

EDENVILLE TOWNSHIP

REV. 12-2-92
S 1/2 SEC 7