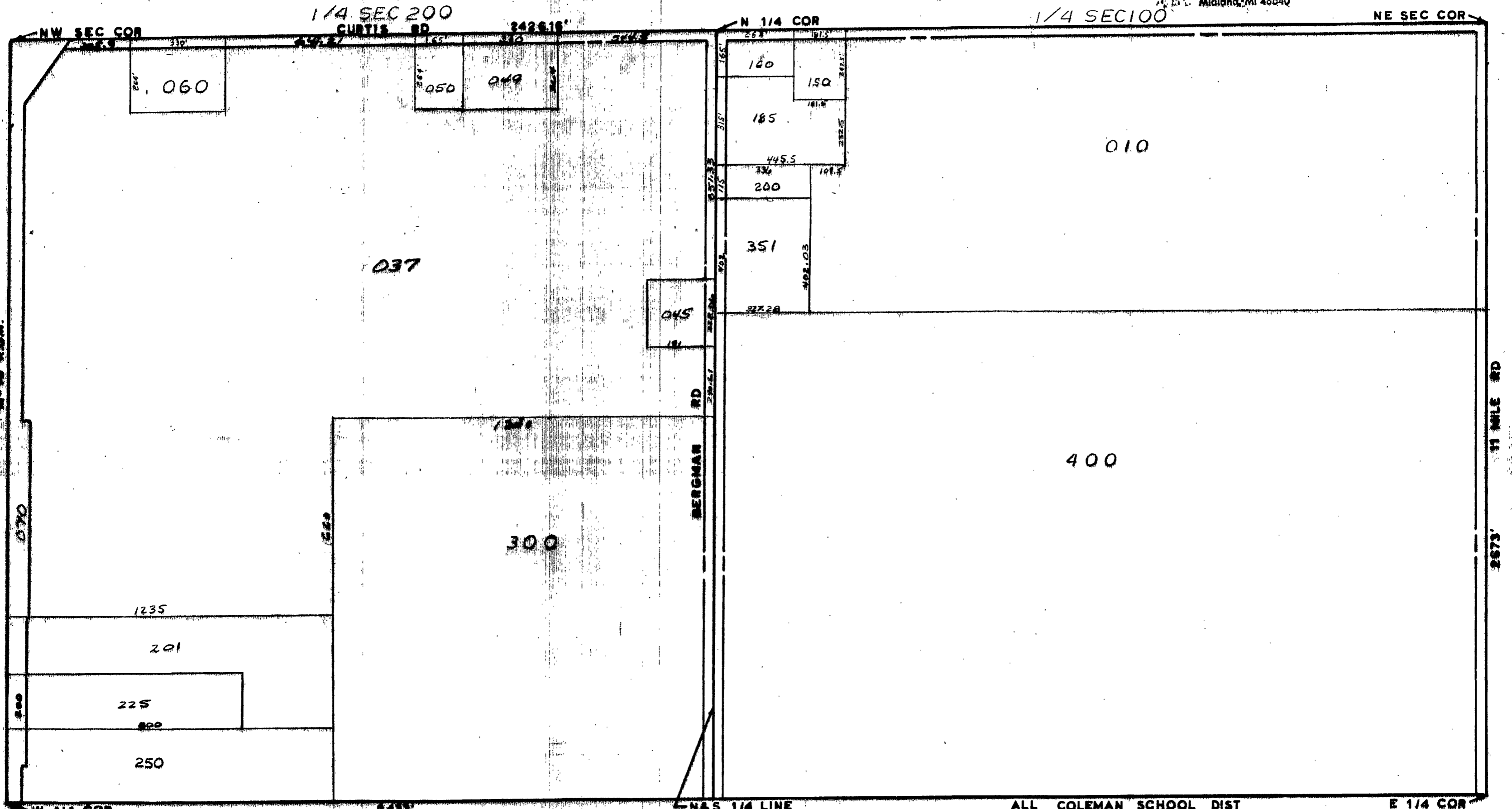


MIDLAND COUNTY
Equalization Department
1212 James Savage Road
Midland, MI 48640



N & S 1/4 LINE
SCALE 1" = 300'
DRAWN BY R.R.Y.

ALL COLEMAN SCHOOL DIST

T 16 N R 1 W

EDENVILLE TOWNSHIP

REV. 12-13-02
N 1/2 SEC 7