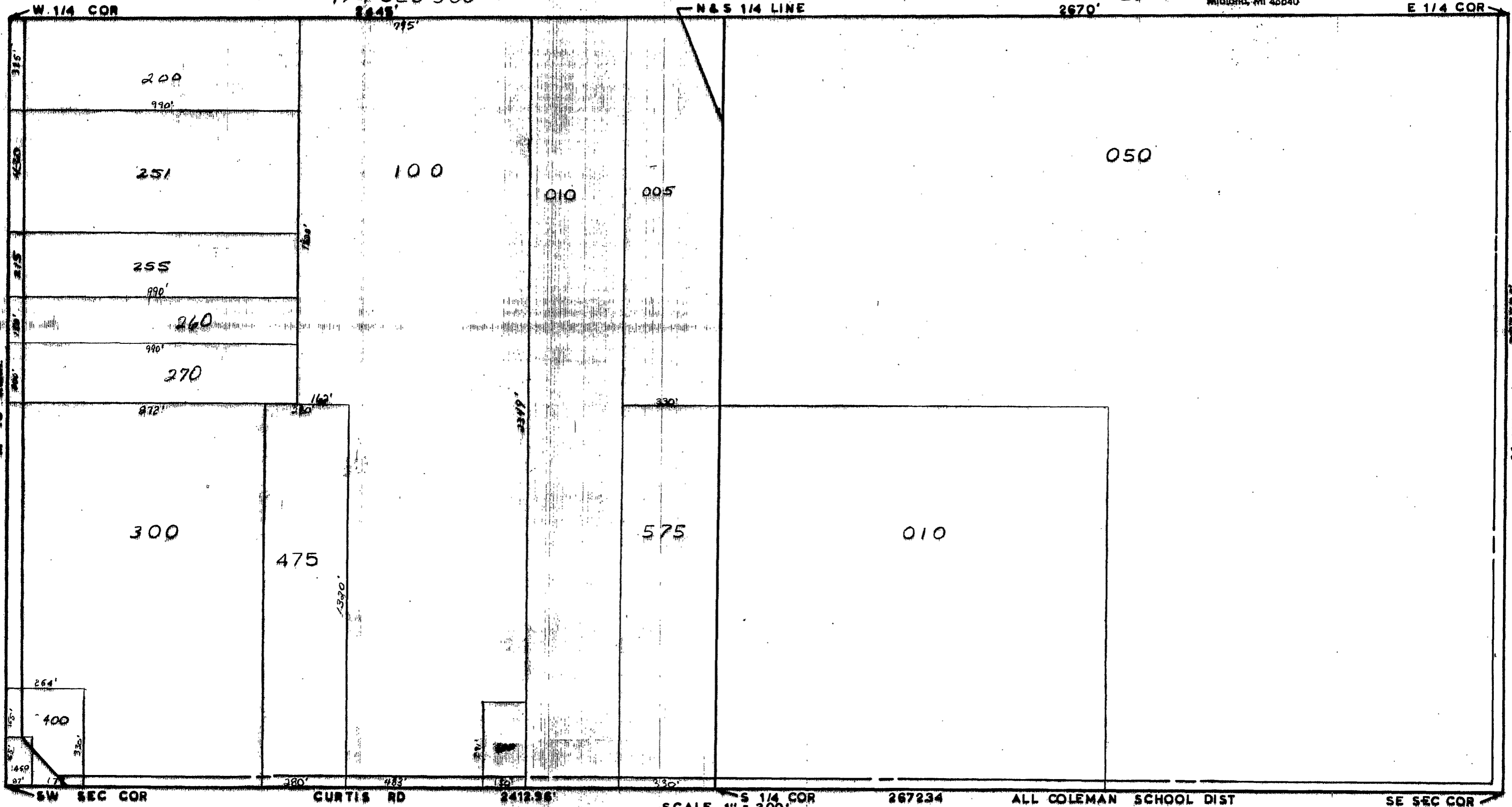


MIDLAND COUNTY
Equalization Department
1212 James Savage Road
Midland, MI 48640

1/4 SEC 300

1/4 SEC 400



SCALE 1" = 300'
DRAWN BY R.R.V.

T 16N R 1W

EDENVILLE TOWNSHIP

REV. 12-17-96
S 1/2 SEC 6