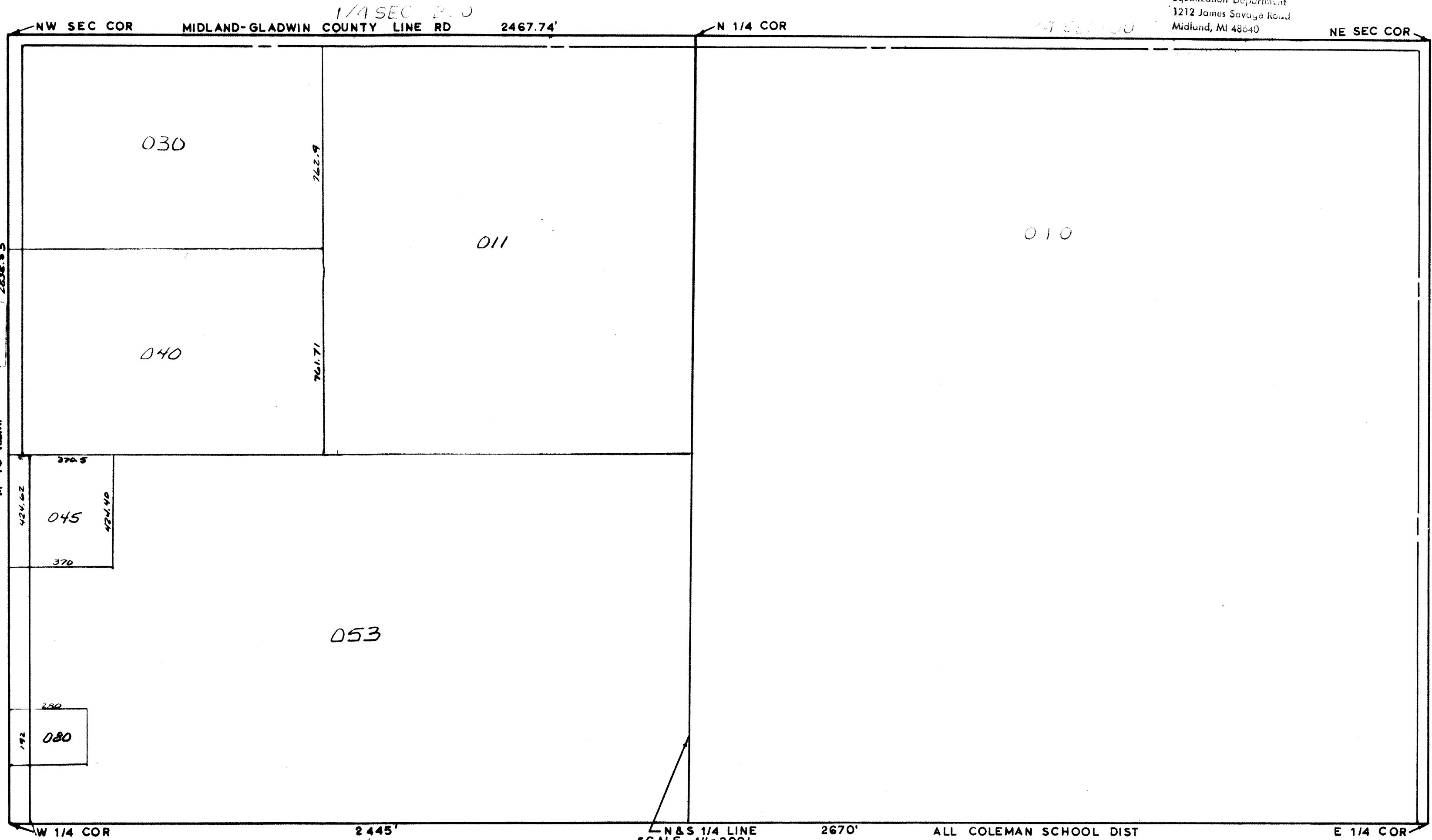


MIDLAND COUNTY
Equalization Department
1212 James Savage Road
Midland, MI 48640



M-18 ROW.
2028.53

11 MILE RD
2620.18'

W 1/4 COR 2445' N & S 1/4 LINE SCALE 1"=300' DRAWN BY R.R.Y. 2670' ALL COLEMAN SCHOOL DIST E 1/4 COR

T 16N R 1W

EDENVILLE TOWNSHIP

REV. 12-8-06
N1/2 SEC 6