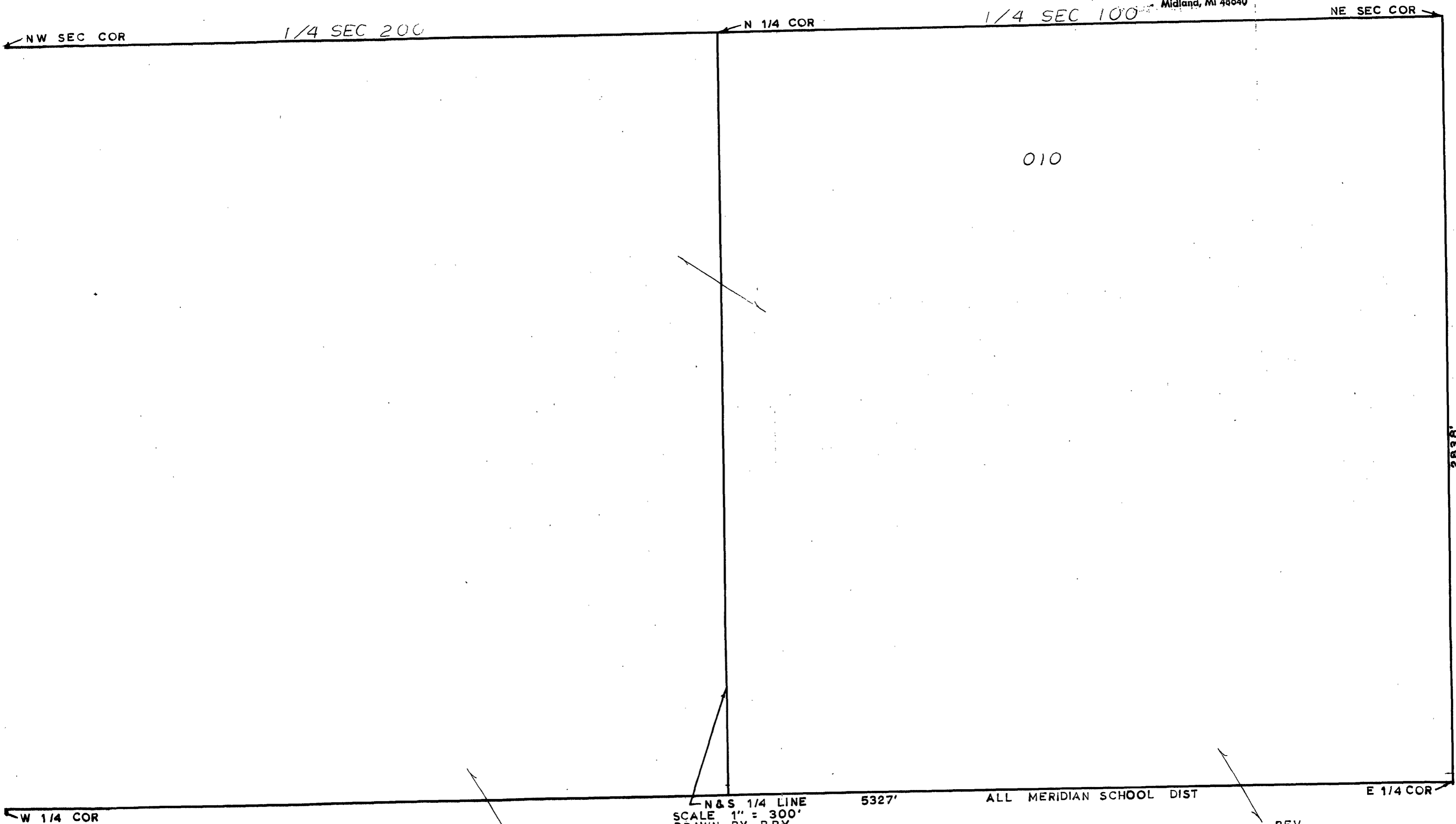


MIDLAND COUNTY
Equalization Department
1212 James Savage Road
Midland, MI 48640



1/4 SEC 200

1/4 SEC 100

010

N & S 1/4 LINE
SCALE 1" = 300'
DRAWN BY R.R.Y.

ALL MERIDIAN SCHOOL DIST

2638'

T16N R1W

EDENVILLE TOWNSHIP

REV. N1/2 SEC 4