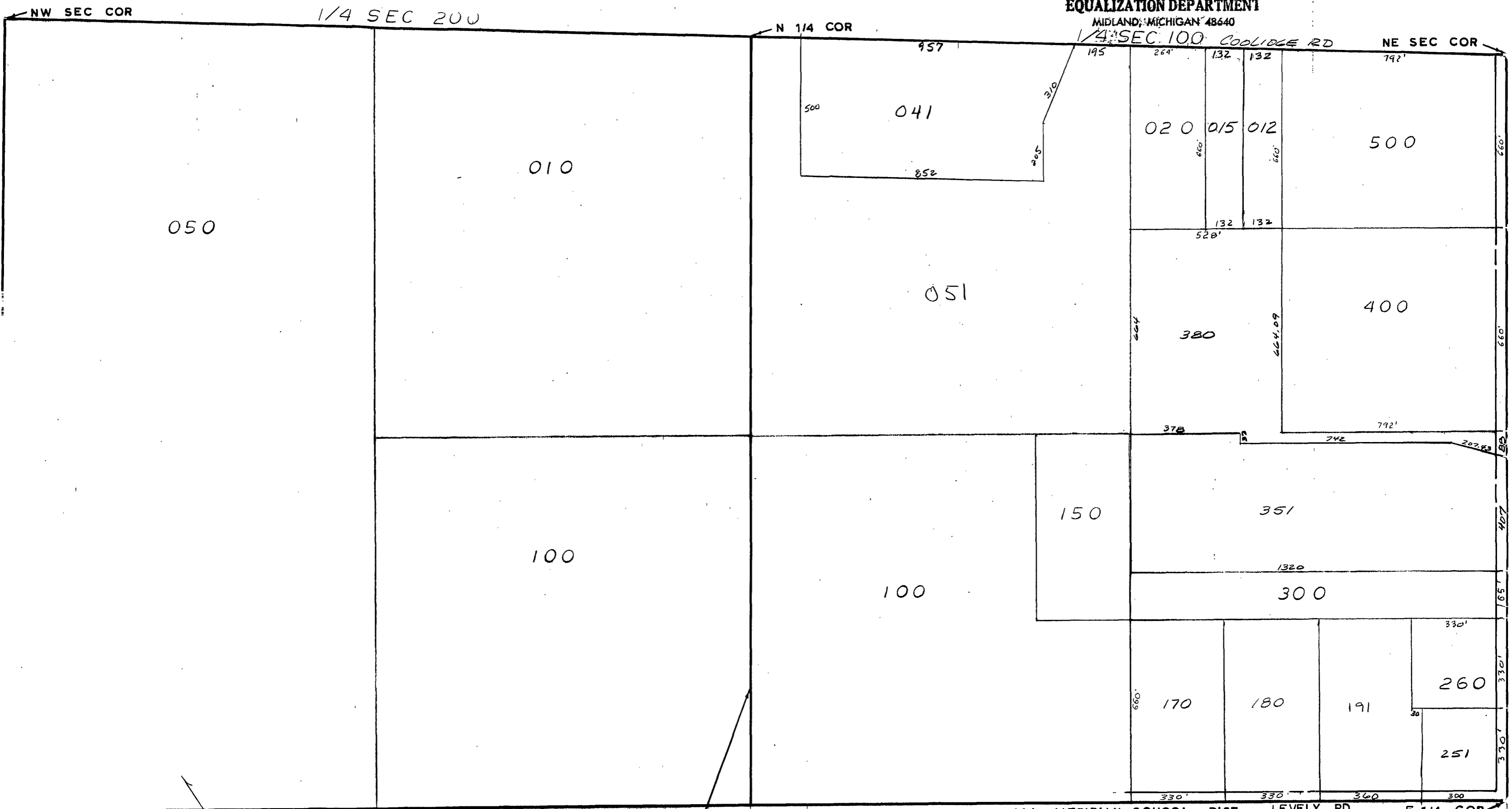


MIDLAND COUNTY
EQUALIZATION DEPARTMENT

MIDLAND, MICHIGAN 48640

1/4 SEC 100 COOLIDGE RD



N & S 1/4 LINE
SCALE 1" = 300'
DRAWN BY R.R.Y.

ALL MERIDIAN SCHOOL DIST LEVELY RD E 1/4 COR

T16N R1W

EDENVILLE TOWNSHIP

REV. 12-13-02
N1/2 SEC 3